

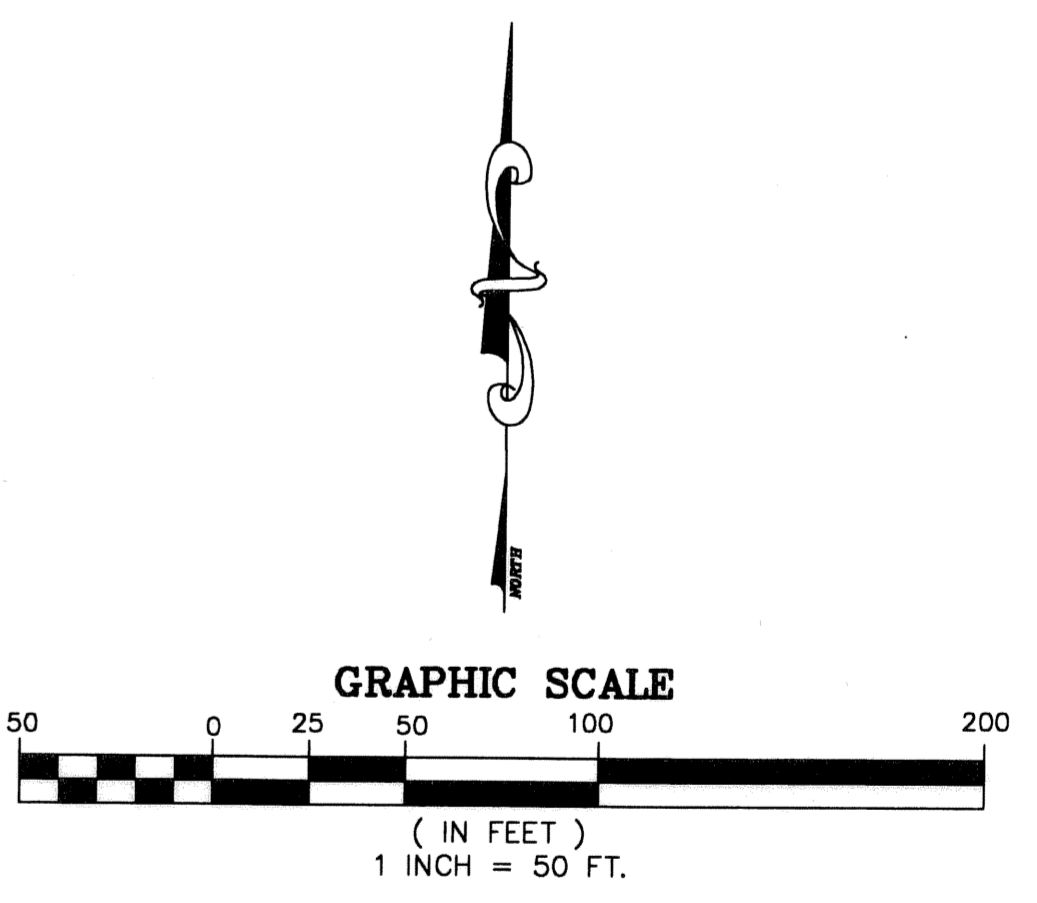
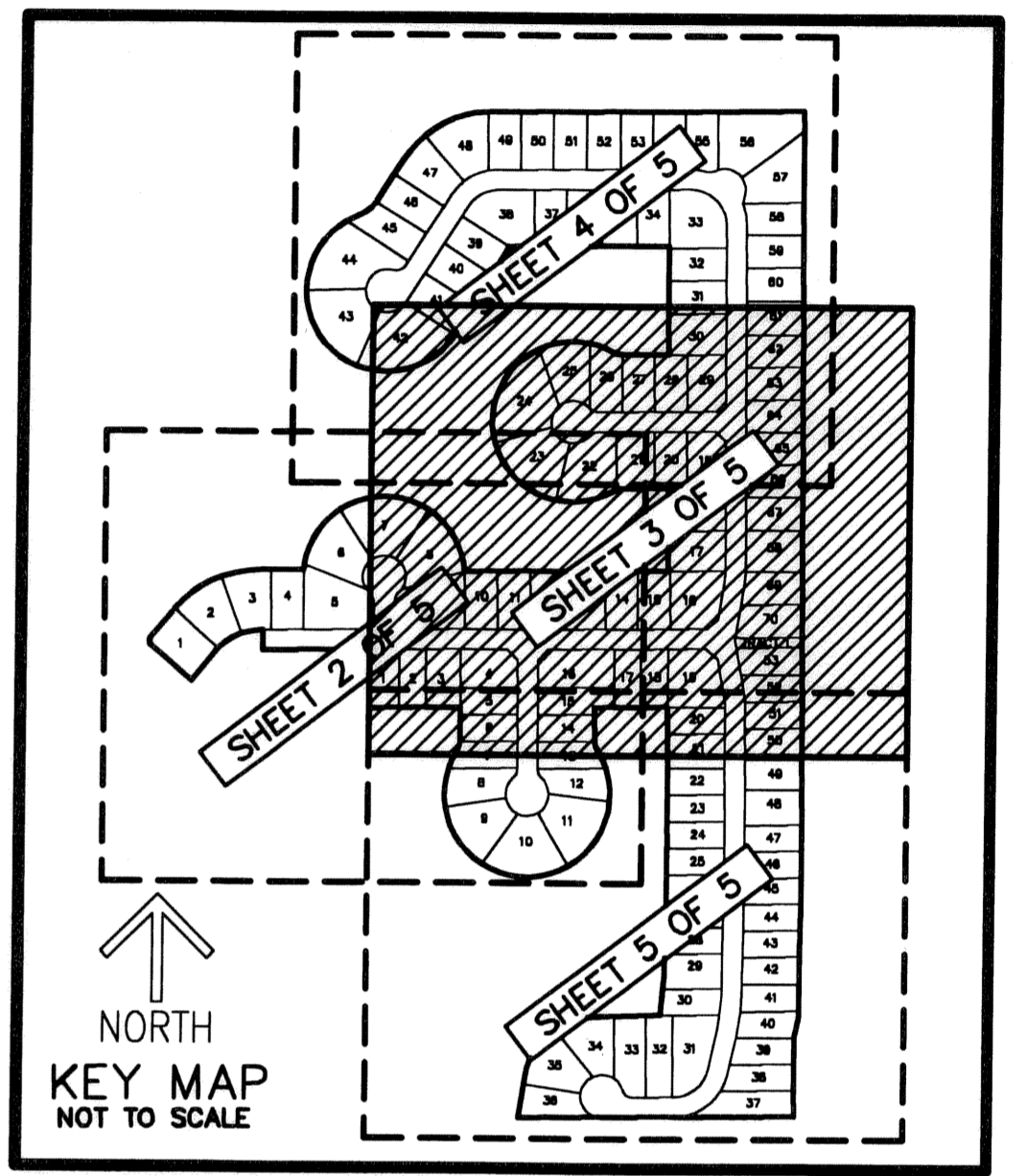
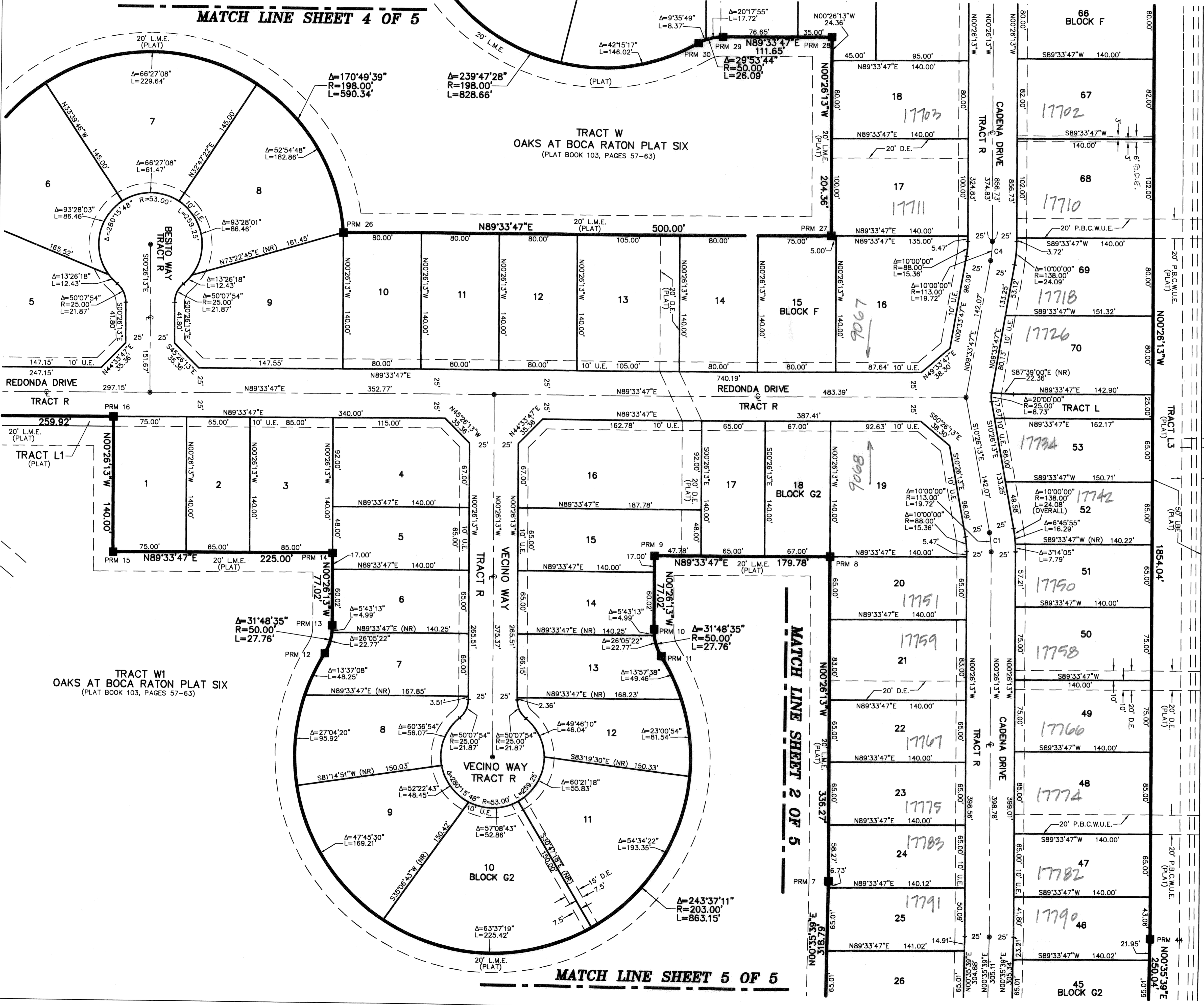
THIS INSTRUMENT PREPARED BY  
 DAVID P. LINDLEY  
 OF  
**CAULFIELD and WHEELER, INC.**  
 SURVEYORS - ENGINEERS - PLANNERS  
 7301-A WEST PALMETTO PARK ROAD, SUITE 100A  
 BOCA RATON, FLORIDA 33433 - (561)392-1991  
 APRIL - 2004

# OAKS AT BOCA RATON PLAT EIGHT

A PLANNED UNIT DEVELOPMENT BEING A PART OF RAINBOW PUD  
 BEING A REPLAT OF TRACTS F, S, G2 AND L2, OAKS AT BOCA RATON PLAT SIX,  
 AS RECORDED IN PLAT BOOK 103, PAGES 57 THROUGH 63 OF THE PUBLIC RECORDS OF PALM BEACH COUNTY, FLORIDA  
 LYING IN SECTION 31, TOWNSHIP 46 SOUTH, RANGE 42 EAST, PALM BEACH COUNTY, FLORIDA

STATE OF FLORIDA  
 COUNTY OF PALM BEACH  
 THIS PLAT WAS FILED FOR  
 RECORD AT \_\_\_\_\_ M.  
 THIS \_\_\_\_\_ DAY OF \_\_\_\_\_  
 A.D. 2004 AND DULY RECORDED  
 IN PLAT BOOK \_\_\_\_\_ ON  
 PAGES \_\_\_\_\_ AND \_\_\_\_\_  
 DOROTHY H. WILKEN  
 CLERK CIRCUIT COURT  
 BY: \_\_\_\_\_  
 DEPUTY CLERK

SHEET 3 OF 5



**CURVE TABLE**

CURVE NO.	CHORD BEARING	CHORD DISTANCE
C1	S05°26'13"E	19.70'
C2	S06°16'10"W	93.94'
C3	S50°45'20"W	141.65'
C4	N04°33'47"E	19.70'
C5	N45°26'06"W	159.80'
C6	S81°02'00"W	107.95'

**NOTES**  
 COORDINATES, BEARINGS AND DISTANCES

COORDINATES SHOWN ARE GRID  
 DATUM = NAD 83 1990 ADJUSTMENT  
 ZONE = FLORIDA EAST  
 LINEAR UNIT = US SURVEY FEET  
 COORDINATE SYSTEM 1983 STATE PLANE  
 TRANSVERSE MERCATOR PROJECTION  
 ALL DISTANCES ARE GROUND  
 SCALE FACTOR = 1.00002099  
 GROUND DISTANCE X SCALE FACTOR = GRID DISTANCE  
 BEARINGS AS SHOWN HEREON ARE GRID DATUM, NAD 83 1990  
 ADJUSTMENT, FLORIDA EAST ZONE.

SUBDIVISION OAKS AT BOCA RATON PLAT 8  
 BOOK 103 PAGE 117  
 FLOOD ZONE A  
 QUAD # 52  
 TAZ # 880  
 PUD NAME RAINBOW